

■ Model No. **CEP-15SS**



Height : 319 mm

Weight : 7.3kgs (w/o battery)

Weight : 8.5kgs (with 2 batteries)

■ Specifications:

Max. Pressure : 700 bar

Oil Required : 1500 cc

■ Oil Delivery:

1.2 L / min at low pressure

0.3 L / min at high pressure

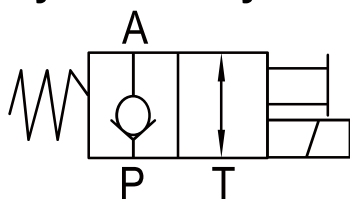
■ Features:

- Pressure and operation data of date by display function.
- Programming Switch for crimping, cutting or lifting propose on the panel.
- Warning Function: Buzzer alert at long deep if crimping not complete and losing pressure when failure caused.
- Display related pumping pressure and battery capacity.
- Environmentally design for saving energy as automatic switch to sleep mode after 3 mins without any activate action.
- Interior Counting function attached
- PSI / BAR unit available.
- Shoulder strap for high wearing comfort.

■ Accessories:

- 18V Battery 4.0Ah, 110V or 230V Charger.
- (See page 69)

■ Hydraulic Symbol Table



■ Close View of NEW CEP-15SS Features



●Strap Installation

The battery-hydraulic pumps are ready to use for overhead operation with the secured strap as easy carrying propose.



●Remote controller as optional operation mode.



●Operate with powerful, high-capacity Li-Ion batteries along and interchangeable of A \ B battery individual detect capacity.



●LCD display. ●Maintenance warning attached.



●Bosch battery power indicator 18V Li-ion battery.



●Room for remote control.

●Overload relay attached. ●Low-voltage protection for extending battery life cycle. ●Intelligent motor control brake. ●Maintenance warning attached.